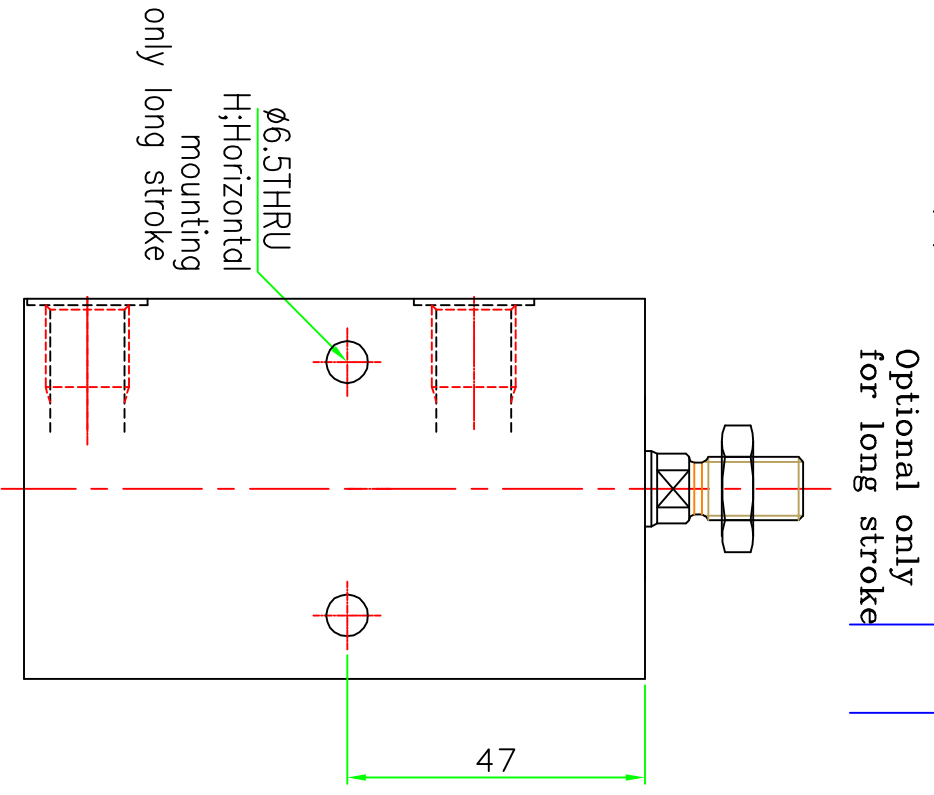
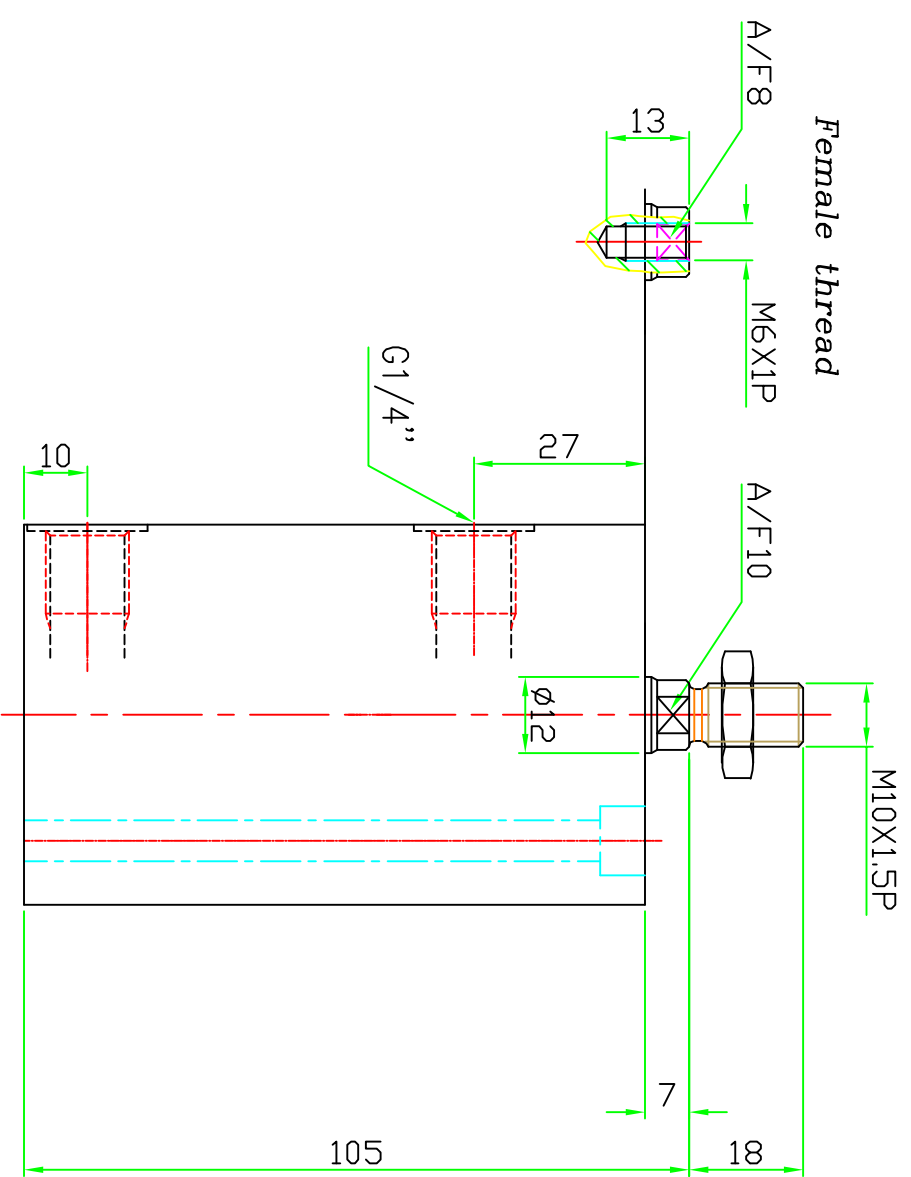


1 2 3 4 5 6 7 8

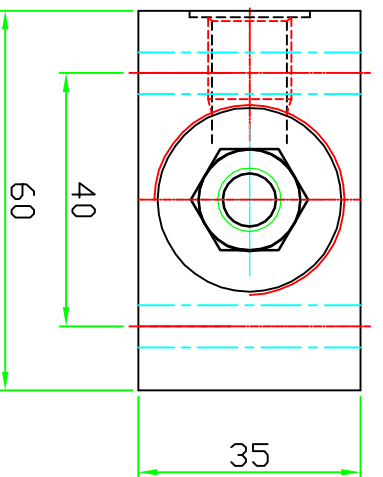
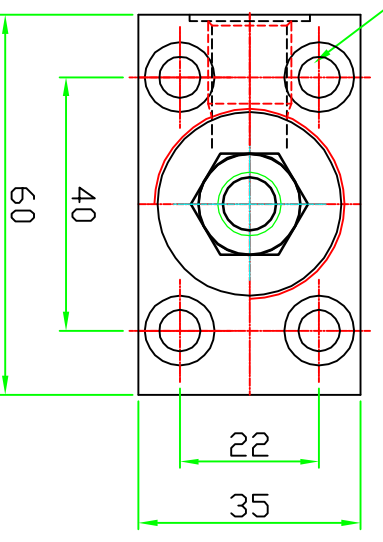
LONG STROKE (L)



Model NO-Male thread-A31301
Female thread-A31302

Specification:-

Type : Double acting hydraulic cylinder.
Bore dia = 16 mm, rod dia = 12 mm
Stroke = 50 mm
Long stroke 50mm. Shorter strokes are obtained by adding Spacers.
Operating pressure : max 250 bar/min 10 bar
Hydraulic oil
Medium (servo system HLP46/HLP68)



Optional only for long stroke

REVISION				DATE	APPROVED
ZONE	REV	FRDM	TD		

SURFACE FINISH	0.025	0.05	0.1	0.2	0.4	0.8	1.6	3.2	6.3	12.5	25	50	100
Ra value μm													

GENERAL TOLERANCES WHERE NOT SPECIFIED		LINEAR - LENGTH OR DIAMETER		ANGULAR-LENGTH IN MM OF SHORT SIDE OF ∠	
0.5-6	±0.1	6-30	±0.2	30-120	±0.3
6-30	±0.2	30-120	±0.3	120-315	±0.5
30-120	±0.3	120-315	±0.5	315-1000	±0.8
120-315	±0.5	315-1000	±0.8	1000-2000	±1.2
315-1000	±0.8	1000-2000	±1.2	UPTO 6	±1°
1000-2000	±1.2	UPTO 6	±1°	6-30	±30'
UPTO 6	±1°	6-30	±30'	30-120	±20'
6-30	±30'	30-120	±20'	120-400	±10'
30-120	±20'	120-400	±10'		

SCALE:	1:1	TITLE	BLOCK CYLINDER DOUBLE ACTING	MATERIAL:	XXX	SHEET NO:	1 OF: 1
--------	-----	-------	---------------------------------	-----------	-----	-----------	---------

DESIGN	TIRUMAL	DATE	22.08.08	MACHINE TYPE		GROUP NO:	
DRAWN	TIRUMAL	DATE	22.08.08	CUSTOMER:		SUPERCEDED BY	
CHECKED						REPLACES	
APPROVED						DRAWING NO:	

- 1.0 GENERAL
- 1.1 ALL DIMENSIONS ARE IN MM.
- 1.2 DO NOT SCALE THE DRG.IF IN DOUBT ASK.
- 1.3 SUBJECT TO CHANGE FOR IMPROVEMENT.

1 2 3 4 5 6 7 8